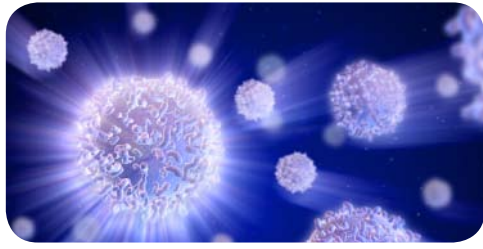


# Training Attention @ Work



A unique peer-coaching programme for leaders, managers and coaches who want to facilitate teams and organisations to think and work systemically.

## Systems Thinking in Practice: A Modular Programme

Euston,  
Central London  
Oct 2011 – Sep 2012

We cover the skills and practise required for the following qualifications:

- ILM Level 3 or 5: Coaching and Mentoring at Work
- NLP Practitioner / Master Practitioner
- Certified Clean Facilitator

The course will be led by:

- Caitlin Walker
- Michael Mallows
- Marian Way

### Who is this course for?

- Innovative thinkers and practitioners from Business, Education and Community Development.
- Those excited about:
  - 'modelling' as a change methodology
  - 'learning organisations' as agile
  - sustainable entities and promoting simple, systemic responses to complex issues.

### What is the format?

- 11 Modules approximately one weekend per month, from 29th October 2011.
- Plus: On-line Master classes with peer coaching and supervision between training sessions for those applying their skills within live projects.

### Cost (inclusive of VAT)

- £1800 for 11 modules of basic Training
- £2100 for the 11 modules plus...
  - 10 two-hour on-line group coaching slots (a must for Master Practitioner)
  - Accountability Partnerships for peer support, coaching and feedback
- £260 per individual module

Optional extras for those wanting the following qualifications:

- + £225 for ILM Coaching and Mentoring at Work registration & assessment
- + £445 for 2-day assessment for Clean Facilitators late Sept 2012

Bursaries available on application

### Pre-course Taster

**24/25 September 2011:**  
Introduction to NLP and Clean

### Module dates:

**29/30 October:**  
NLP and Modelling

**19/20 November:**  
Clean Language and Symbolic Modelling

**7/8 January 2012:**  
Coaching and Mentoring Principles and Practice: Outcomes, Feedback and Action (ILM)

**4/5 February:**  
Language: Meta-programmes, Meta-model and Metaphor

**3/4 March:**  
Advanced Clean Language, Clean Space and Emergent Knowledge

**14/15 April:**  
Modelling problems, outcomes, binds and excellence

**19/20 May:**  
Embodied Awareness – different kinds of knowing

**2/3 June:**  
Coaching and Mentoring at Work (ILM)

**30 June/1st July:**  
Systemic Modelling in Practise from Contract to Evaluation

**14/15 July:**  
Advanced Team and Organisational Coaching (ILM)

**8/9 September:**  
Consolidation, Reflection and Evaluation

### The syllabus includes:

#### Observation and Patterning Skills

Detecting Linguistic Patterns  
Representations Systems  
Eye Accessing  
Meta-programmes

#### Questioning and Interviewing

Clean Questions  
Meta-model  
Problems, Remedies & Outcomes  
Clean and Crafty Conversations

#### Coaching

Clean Set-up  
Clean Feedback  
Anchoring  
State Elicitation  
Moving from Drama to Karma

#### Group Facilitation – Systemic Modelling in Practice

Managing Outcome Focused Meetings  
Creating Networks of Attention  
Metaphors @ Work

#### Advanced modelling techniques

Binds and Double Binds  
Clean Space  
Emergent Knowledge  
Embodied Intuition  
Modelling Intractable Problems  
Modelling Excellence  
Eliciting, honing and embedding models

#### Creating Systemic Modelling Projects at Work

Contracting and Success Criteria  
Base-line Assessments  
Code Congruent Interventions  
Observations and Feedback  
Evaluation

For more information / to book,  
please email [caitlin@trainingattention.co.uk](mailto:caitlin@trainingattention.co.uk)

[www.trainingattention.co.uk](http://www.trainingattention.co.uk)